

An aerial photograph of a university campus. In the foreground, there's a large green field with a running track. To the left, there are several brick buildings. In the background, there's a dense forest of trees with autumn foliage in shades of yellow, orange, and red. Further back, a city skyline is visible under a clear sky. The text "SUSTAINABILITY ON CAMPUS" is overlaid in large, white, sans-serif capital letters. Below it, "UHARTDINING" is written in a smaller, white, sans-serif font. The entire image is framed by a green border with a yellow vertical stripe on the left and right sides.

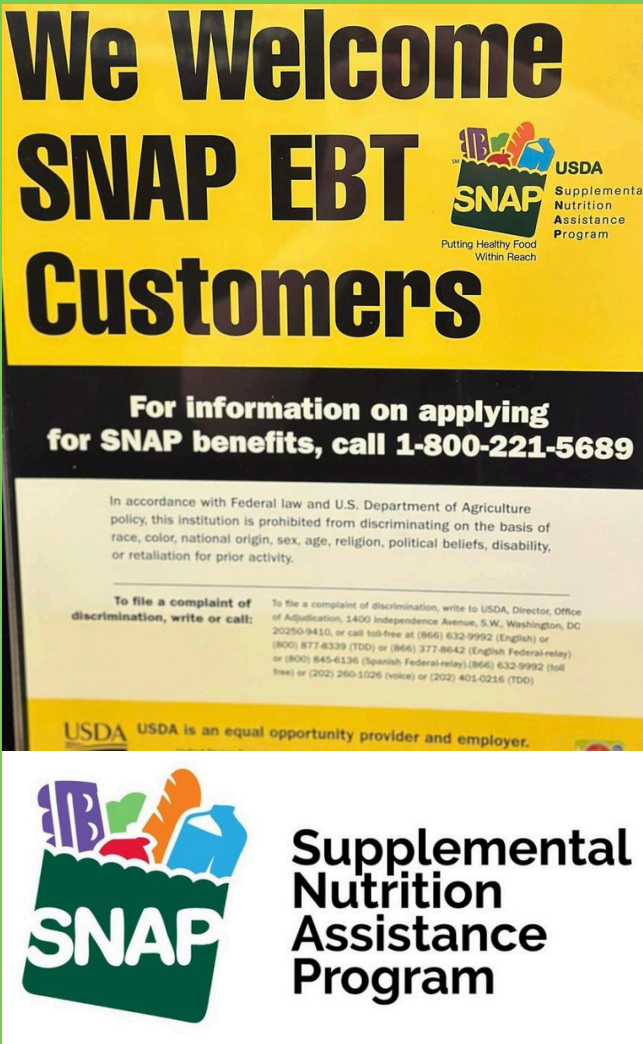
# SUSTAINABILITY ON CAMPUS

UHARTDINING



DINING SERVICES

# Sustainability



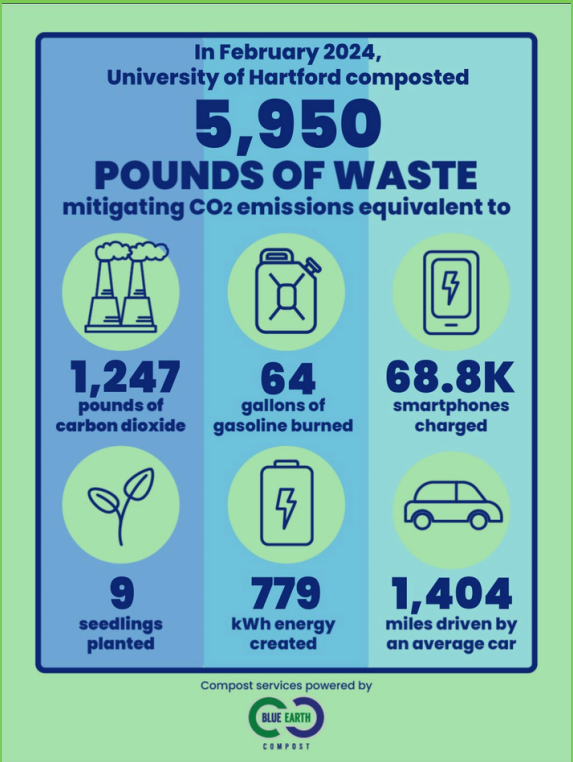
SNAP at the Village Market



SWIPE OUT HUNGER



Babylon



Blue Earth



Scraps to Scrumptious



Nosh



UHart Dining Community Garden





**Supplemental  
Nutrition  
Assistance  
Program**

**We Welcome  
SNAP EBT  
Customers**



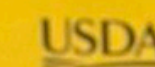
**USDA**  
Supplemental  
Nutrition  
Assistance  
Program  
Putting Healthy Food  
Within Reach

**For information on applying  
for SNAP benefits, call 1-800-221-5689**

In accordance with Federal law and U.S. Department of Agriculture policy, this institution is prohibited from discriminating on the basis of race, color, national origin, sex, age, religion, political beliefs, disability, or retaliation for prior activity.

**To file a complaint of  
discrimination, write or call:**

To file a complaint of discrimination, write to USDA, Director, Office of Adjudication, 1400 Independence Avenue, S.W., Washington, DC 20250-9410, or call toll-free at (866) 632-9992 (English) or (800) 877-8339 (TDD) or (866) 377-8642 (English Federal-relay) or (800) 845-6136 (Spanish Federal-relay). (866) 632-9992 (toll free) or (202) 260-1026 (voice) or (202) 401-0216 (TDD)



**USDA** USDA is an equal opportunity provider and employer.





*Swipe Out Hunger is the national nonprofit powering the movement to end college student hunger. We have partnered with Swipe Out Hunger to collect unused student meal swipes, donated by students, and give them to students in need.*



# BABYLON FARMSHELF



## 3X

BABYLON HERBS GROW 3X FASTER THAN CONVENTIONAL FARMING. THE PLANTS START IN THE GERMINATION DRAWERS FOR 7-10 DAYS UNTIL THEY RE MOVED UP.



## UTILIZATION

ALL HERBS ARE UTILIZED IN THE DINING HALL AT DIFFERENT STATIONS IN DIFFERENT MEALS. RECENTLY THE BASIL HAS BEEN USED AT THE PIZZA STATION.



# The Nosh and Food Pantry Donations

We consistently donate to UHART's Nosh  
Pantry as well as countless others off  
campus including:

House of Bread

Open Earth

Rooming House

Merry House

and more



The **Nosh**  
Food for the Hart





# UHART COMMUNITY GARDEN

The Community Garden is located behind Commons and all produce is either donated to local pantry's or given to students!







# Environmental Impact Report



For the Filta Services provided for  
University of Hartford Commons & Hawks  
University of Hartford, West Hartford, CT 06117

For the period  
01/01/2023 -  
12/31/2023

Pounds of Oil Saved with  
FiltaFry Service  
**9,300 pounds**

Pounds of Waste Oil collected  
& recycled with FiltaBio Service  
**9,300 pounds**



OIL SAVINGS	Pounds of Oil Saved	9,300
	Gallons of Oil Saved	1,240
	# of 35 pound Jugs	266

From farming and processing the crop, to packaging and shipping the oil, the environmental impact of getting oil into your fryers is astonishing.

Shown Below, you'll see the reduced environmental impact due to the oil savings from using the FiltaFry service.

## Farming & Processing Savings

	Land	17.7	acres
	Water	12.5	million gallons
	Pesticides	20.0	lbs
	Fertilizer	744.0	lbs
	Lime	6,341.0	lbs

## Farming & Processing Energy Savings

	Diesel	70.9	gallons
	Gasoline	22.3	gallons
	Electricity	117.3	kWh
	Propane	12.9	gallons
	Natural Gas	1,034.7	cubic ft

## Packaging & Transport Savings

	Plastic	318.9	lbs
	Cardboard	212.6	lbs
	Diesel	199.5	gallons

## Carbon Offset

	From Fuel	5,955.7	lbs
	Like Planting	298	trees





# Environmental Impact Report



For the Filta Services provided for  
**University of Hartford Gengras**  
University of Hartford, West Hartford, CT 06117

For the period  
01/01/2023 -  
12/31/2023

Pounds of Oil Saved with  
FiltaFry Service  
**7,450 pounds**

Pounds of Waste Oil collected  
& recycled with FiltaBio Service  
**7,450 pounds**



OIL SAVINGS	Pounds of Oil Saved	7,450
	Gallons of Oil Saved	993
	# of 35 pound Jugs	213

From farming and processing the crop, to packaging and shipping the oil, the environmental impact of getting oil into your fryers is astonishing.

Shown Below, you'll see the reduced environmental impact due to the oil savings from using the FiltaFry service.

### Farming & Processing Savings

Land	14.2	acres
Water	10.0	million gallons
Pesticides	16.0	lbs
Fertilizer	596.0	lbs
Lime	5,079.6	lbs

### Farming & Processing Energy Savings

Diesel	56.8	gallons
Gasoline	17.9	gallons
Electricity	93.9	kWh
Propane	10.4	gallons
Natural Gas	828.9	cubic ft

### Packaging & Transport Savings

Plastic	255.4	lbs
Cardboard	170.3	lbs
Diesel	159.8	gallons

### Carbon Offset

From Fuel	4,770.9	lbs
Like Planting	239	trees

Sources available on request.



In January 2024,  
University of Hartford composted

**3,550**  
**POUNDS OF WASTE**  
mitigating CO<sub>2</sub> emissions equivalent to



**744**  
pounds of  
carbon dioxide



**38**  
gallons of  
gasoline burned



**41.1K**  
smartphones  
charged



**6**  
seedlings  
planted



**465**  
kWh energy  
created



**838**  
miles driven by  
an average car

Compost services powered by



In February 2024,  
University of Hartford composted

**5,950**  
**POUNDS OF WASTE**  
mitigating CO<sub>2</sub> emissions equivalent to



**1,247**  
pounds of  
carbon dioxide



**64**  
gallons of  
gasoline burned



**68.8K**  
smartphones  
charged



**9**  
seedlings  
planted



**779**  
kWh energy  
created



**1,404**  
miles driven by  
an average car

Compost services powered by



In March 2024,  
University of Hartford composted

**4,500**  
**POUNDS OF WASTE**  
mitigating CO<sub>2</sub> emissions equivalent to



**943**  
pounds of  
carbon dioxide



**48**  
gallons of  
gasoline burned



**52.1K**  
smartphones  
charged



**7**  
seedlings  
planted



**590**  
kWh energy  
created



**1,062**  
miles driven by  
an average car

Compost services powered by





# From Scraps to Scrumptious

Promoting a circular economy

Produce with superficial imperfections makes up an estimated **35% of agricultural waste**.

By utilizing imperfect produce, we are reducing agricultural waste, with one additional fantastic value add; establishing a unique and altruistic connection between people & the food they eat.

Our Scraps to Scrumptious program also focuses on utilizing the entirety of an ingredient to minimize overall waste. What would typically be seen as “scraps” can be used to cook creatively!



# Scraps to Scrumptious

► Promoting sustainability and reducing food waste by offering products that have minor cosmetic defects, such as irregular shapes or sizes.

► Utilizing imperfect fruits and vegetables in applications to be cut, cooked, and/or pureed.



Redefining beauty in produce.  
Because all fruits and veggies deserve to be loved.



IMPERFECT™  
produce #loveuglyfood